



STYLE #11818

Woolscape

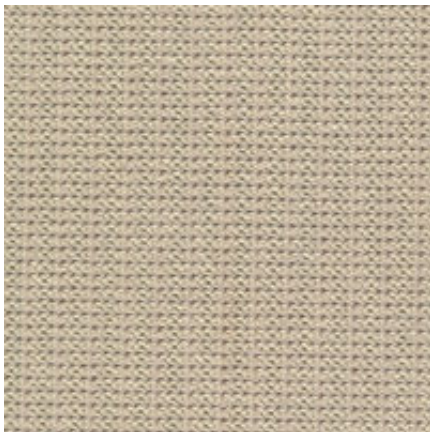
Fiber: New Zealand Wool

Construction: Woven

Surface Texture: Cut & Loop

Pattern Repeat: .60"W X .47"L

Width: 12'



Alabaster



Nutmeg



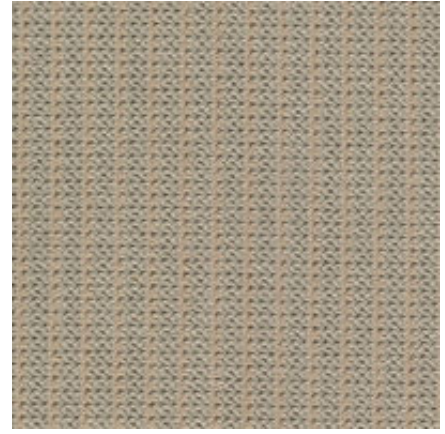
Bay Leaf



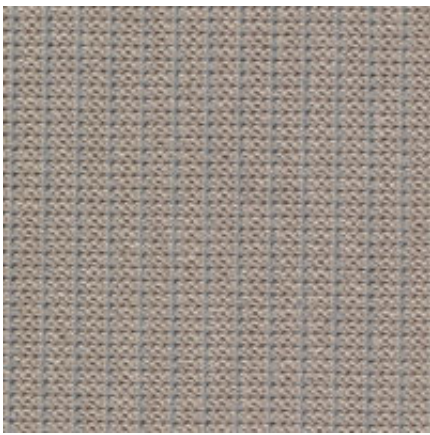
Morel



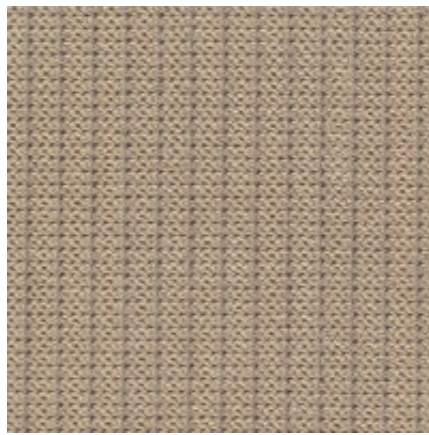
Desert Sand



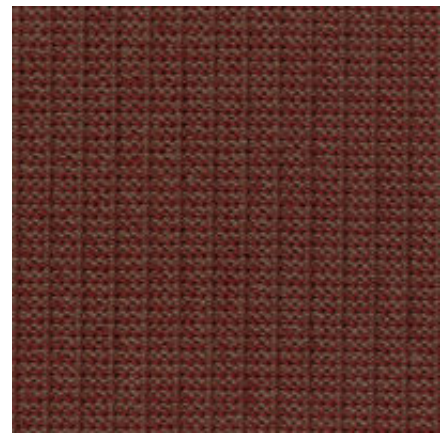
Basil



Mineral Spring



Praline Cream



Redwood



Toffee