



STYLE #11819

Metro Weave

Fiber: New Zealand Wool

Construction: Woven

Surface Texture: Cut & Loop

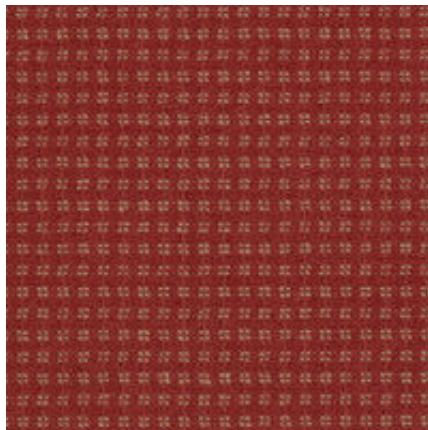
Pattern Repeat: .75"W X .78"L

Indoor Air Quality: CRI Green Label Plus GLP 5335

Width: 12'



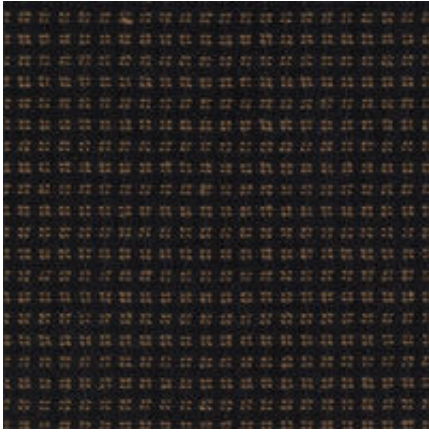
Bisque



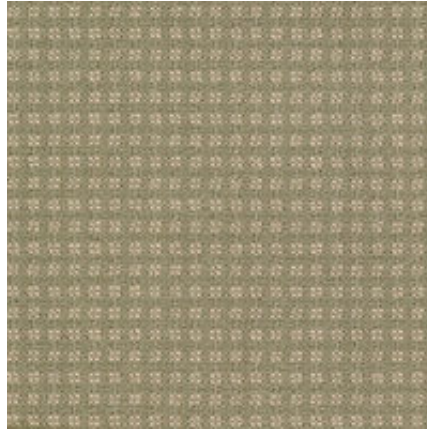
Cabernet



Latte



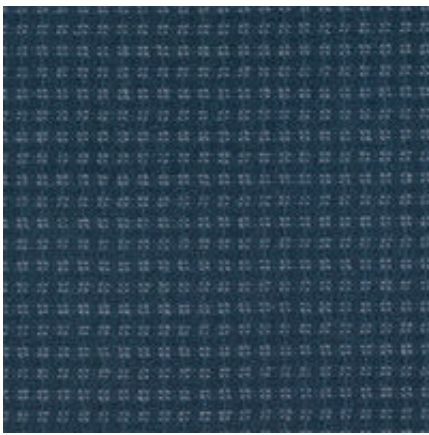
Twilight



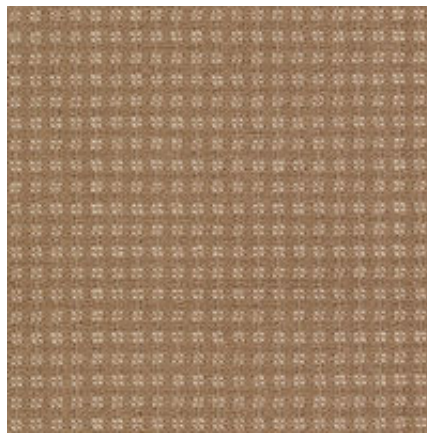
Fresh Mint



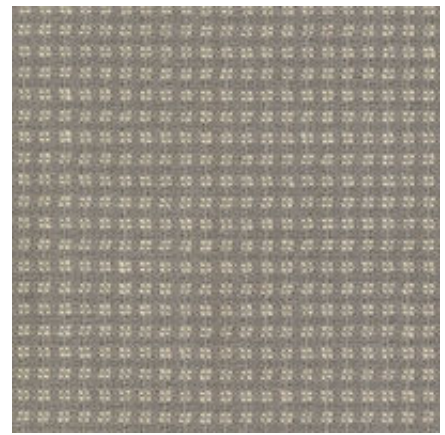
Sunburst



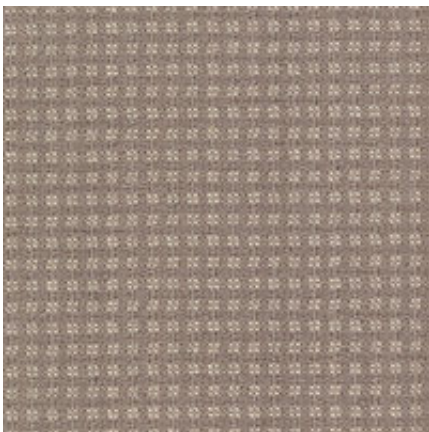
Azure



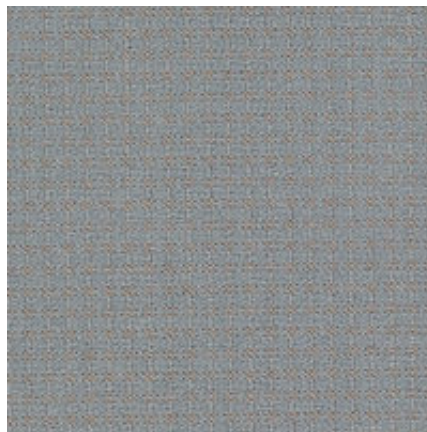
Cayenne



Platinum



Dove



Wispy Blue



Dark Ale