



STYLE #11212

Caledonia Point

Fiber: New Zealand Wool

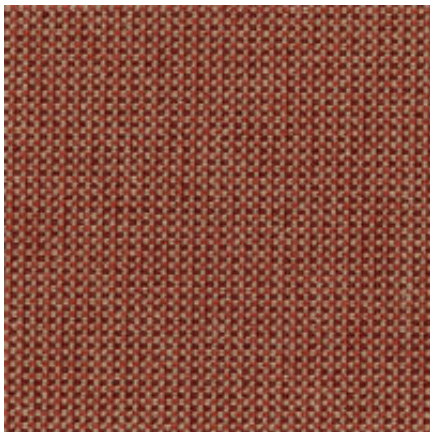
Construction: Woven

Surface Texture: Loop

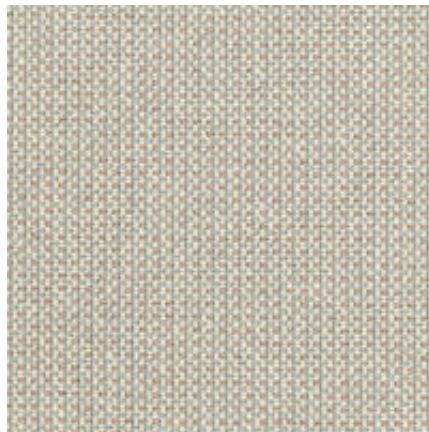
Pattern Repeat: .5"W x .46"L

Indoor Air Quality: CRI Green Label Plus GLP 5335

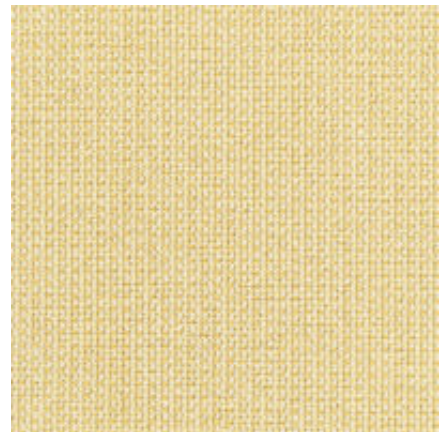
Width: 12'



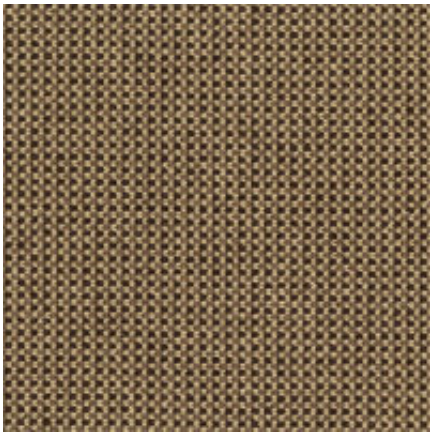
Tomate



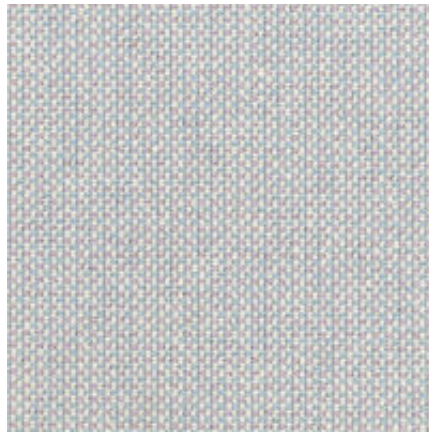
Mercure



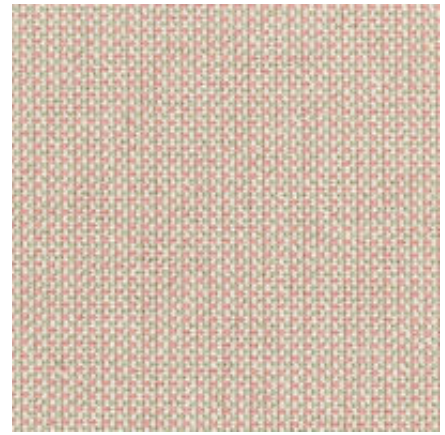
Papillon



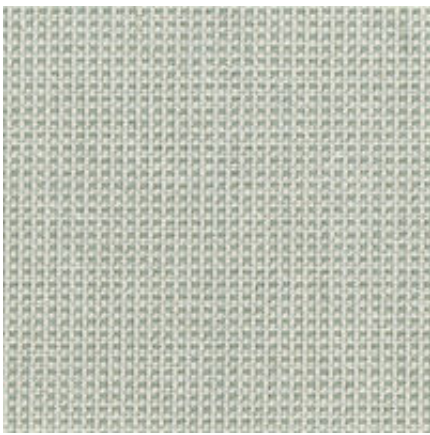
Coco



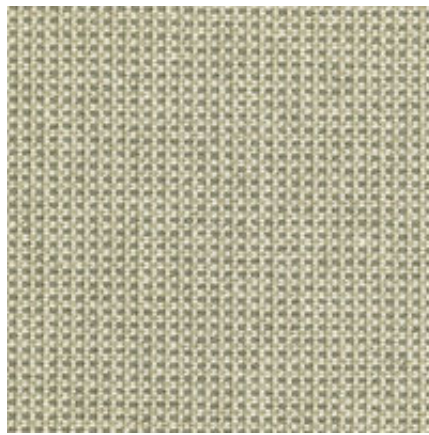
Lavande



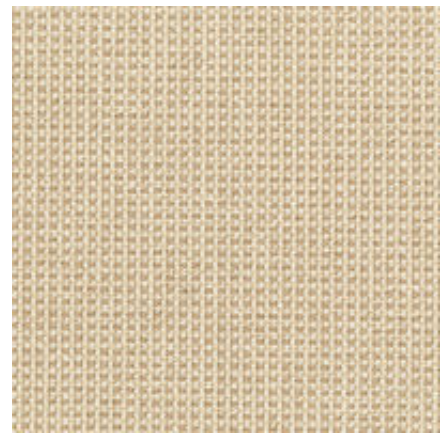
Rose Menthe



Champ Frais



Sauge



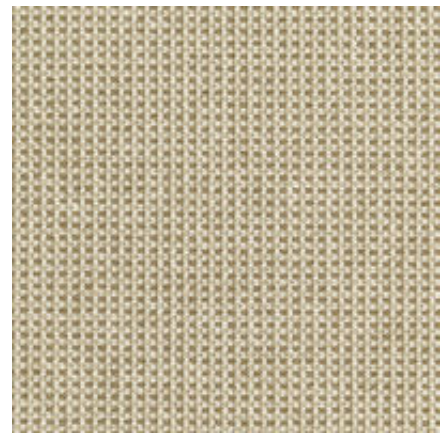
Paillason



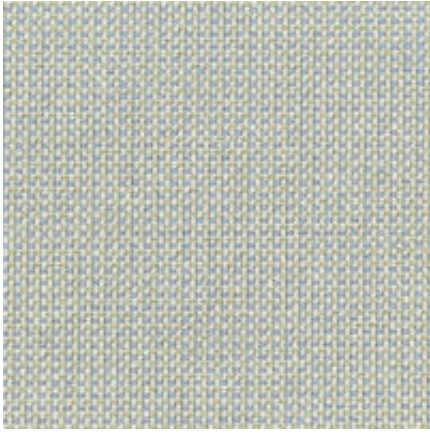
Creme Cafe



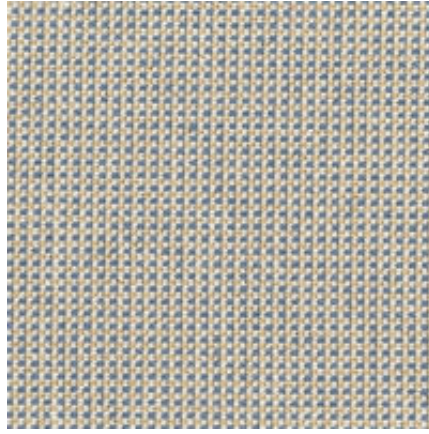
Chamois Gray



Olivier



Horizon Azure



Sable Bleu