



STYLE #11212

# Caledonia Point

**Fiber:** New Zealand Wool

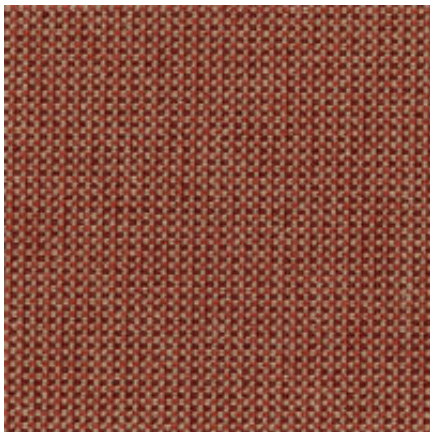
**Construction:** Woven

**Surface Texture:** Loop

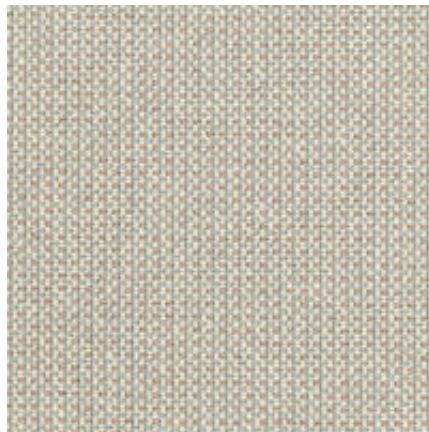
**Pattern Repeat:** .5"W x .46"L

**Indoor Air Quality:** CRI Green Label Plus GLP 5335

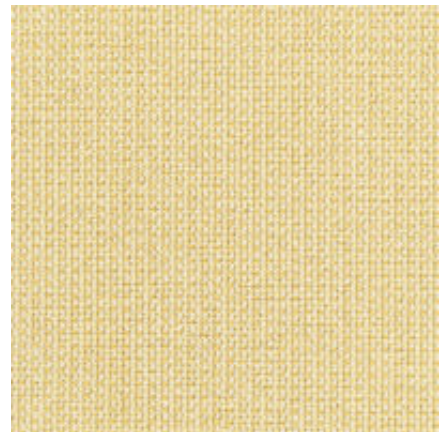
**Width:** 12'



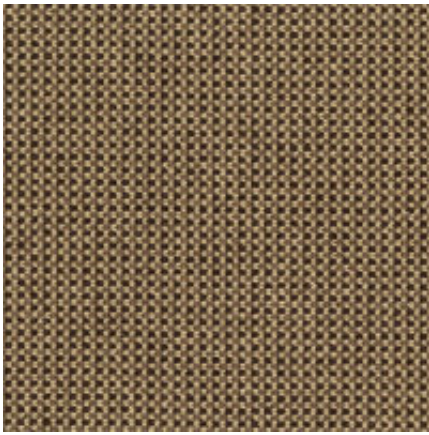
Tomate



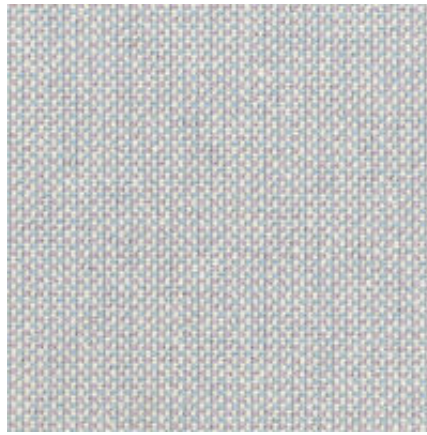
Mercure



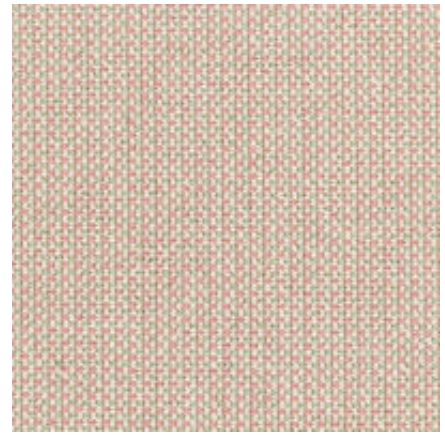
Papillon



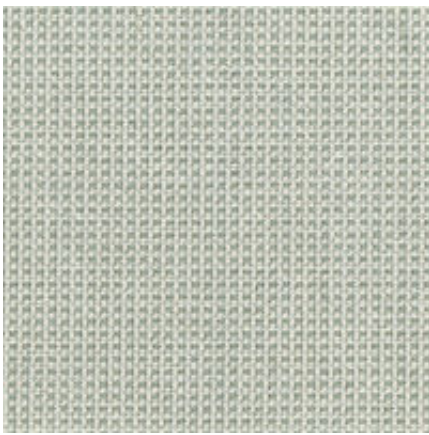
Coco



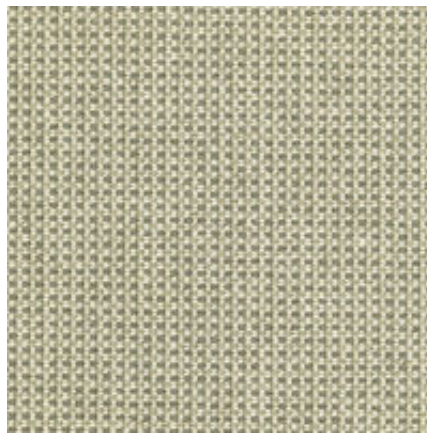
Lavande



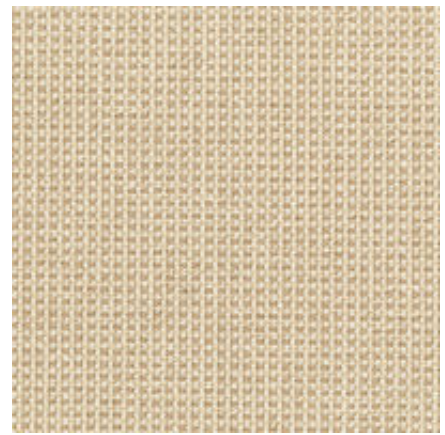
Rose Menthe



Champ Frais



Sauge



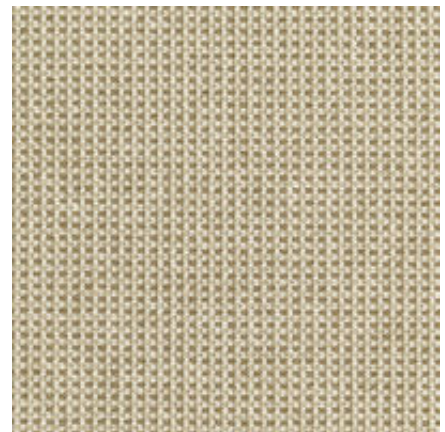
Paillason



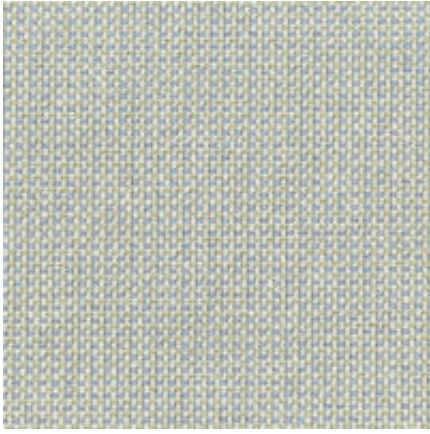
Creme Cafe



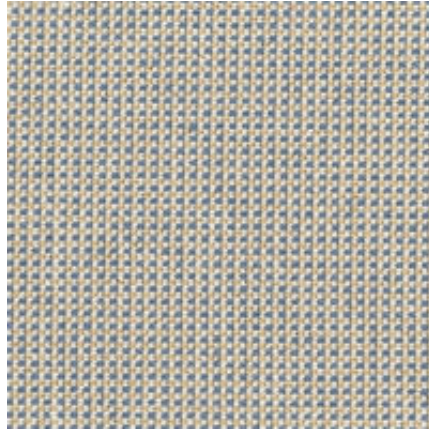
Chamois Gray



Olivier



Horizon Azure



Sable Bleu